

1,838 - 2,560 SQ FT
OFFICE SPACE

FOR LEASE
971 Calle Negocio #200C
San Clemente



JOHNSTON PACIFIC

COMMERCIAL REAL ESTATE, INC.



WWW.JOHNSTON-PACIFIC.COM

949-366-2020

- **Total Unit sq. ft.:** 2,560
- **Option 1:** 2,560 sq. ft.
- **Option 2:** 1,838 sq. ft.
- **Option 3:** 2,309 sq. ft.
- Open and Private Offices
- Conference Room
- 2:1 Parking Ratio & Ample Street Parking
- 2 Restrooms
- Balcony
- Asking Rate: \$1.70 sq. ft MG

Rob Johnston

Rob@Johnston-Pacific.com

License# 01121630

Louis Johnston

Louis@Johnston-Pacific.com

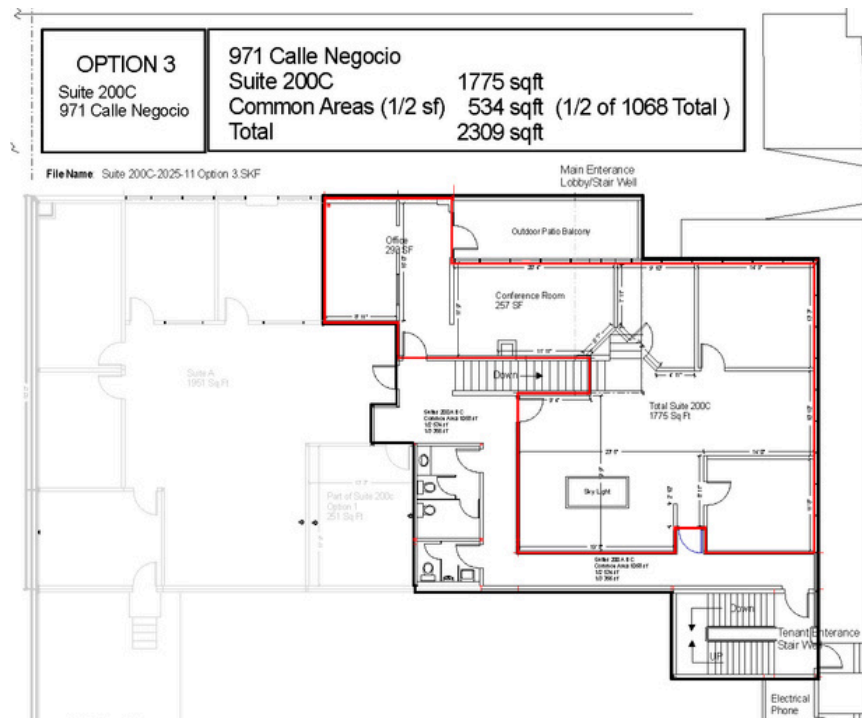
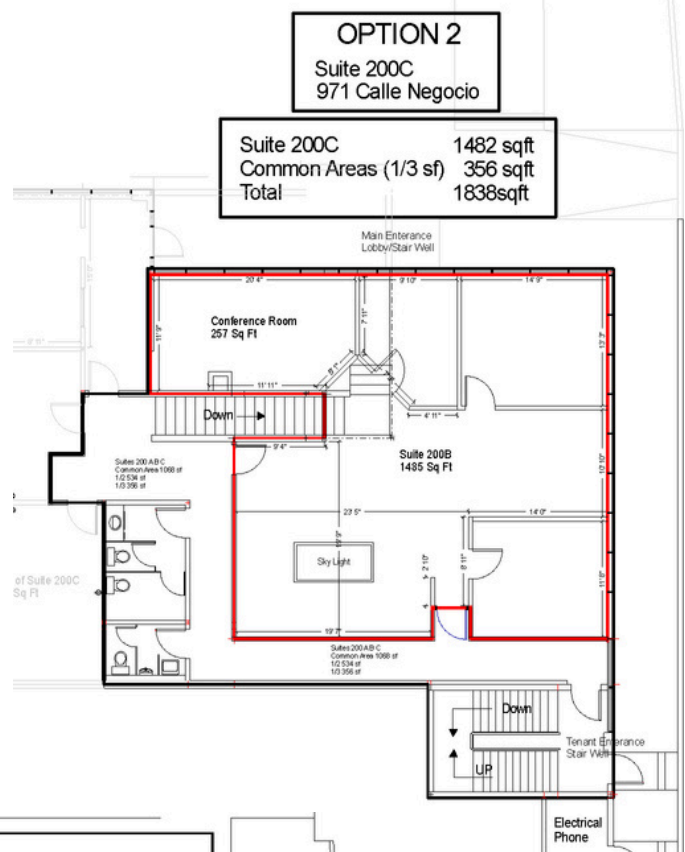
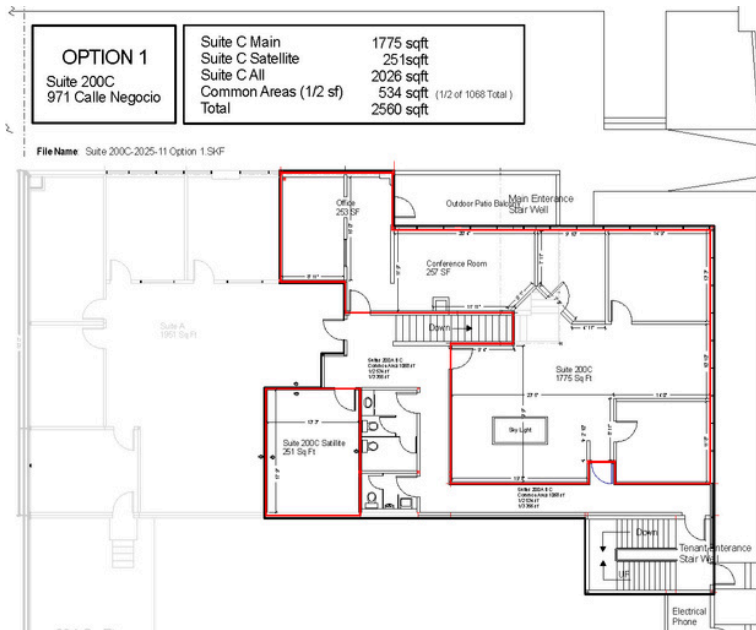
License# 02054162



The information obtained above has been obtained from sources believed to be reliable. While we do not doubt its accuracy, we have not verified it, make no guarantee, warranty or representation about it. It is your responsibility to independently confirm its accuracy and completeness. All information is subject to change without notice.

PROPERTY FLOOR PLAN

971 Calle Negocio #200C
San Clemente



949-366-2020



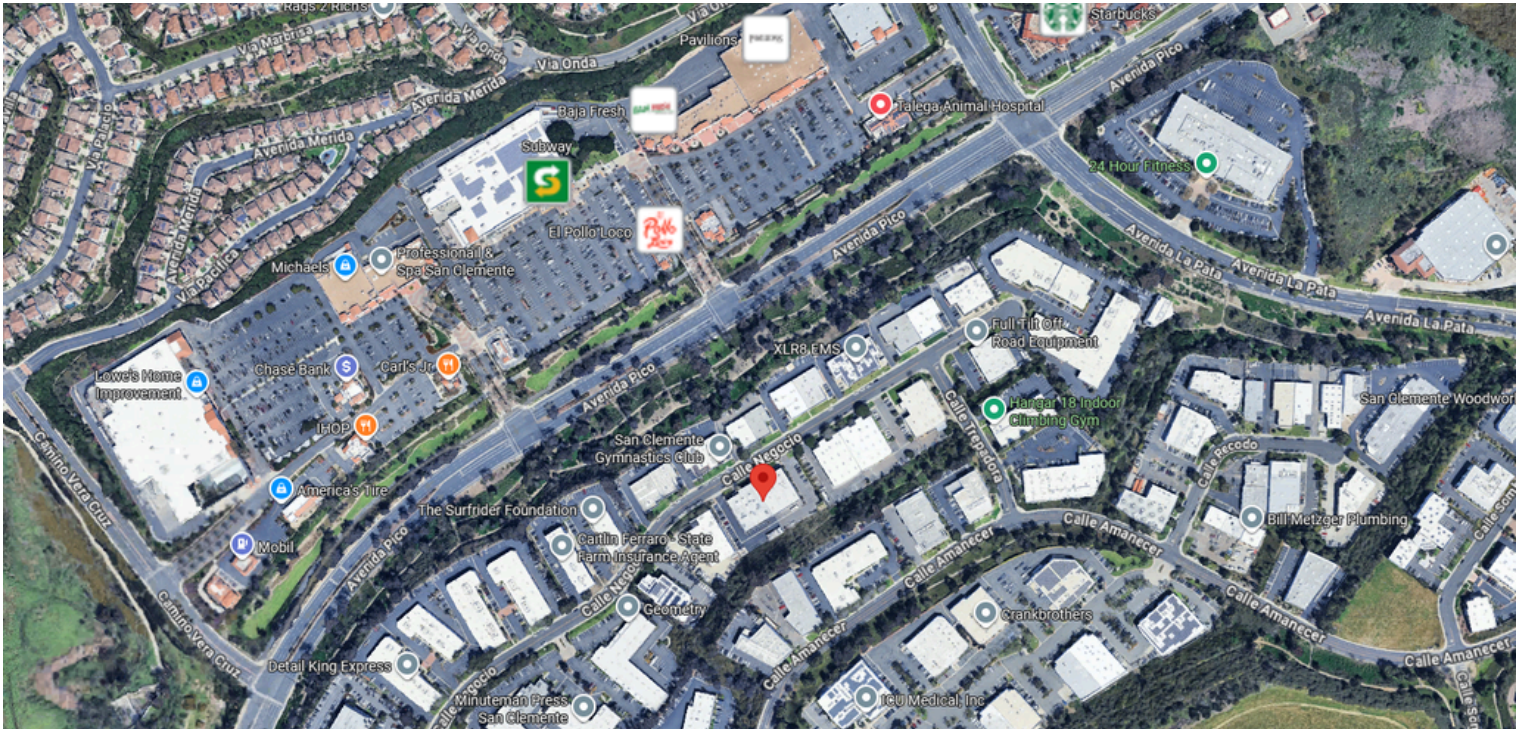
Rob Johnston
Rob@Johnston-Pacific.com
License# 01121630

Louis Johnston
Louis@Johnston-Pacific.com
License# 02054162

1305 Calle Avanzado, San Clemente, CA 92673
26240 Enterprise Court, Lake Forest, CA 92630
www.Johnston-Pacific.com



FOR LEASE 1,838 - 2,560 sq. ft. 971 Calle Negocio, San Clemente



WWW.JOHNSTON-PACIFIC.COM

949-366-2020



ROB JOHNSTON

Lic# 01121630

Rob@Johnston-Pacific.com

LOUIS JOHNSTON

Lic# 02054162

Louis@Johnston-Pacific.com

JOHNSTON-PACIFIC
COMMERCIAL REAL ESTATE, INC.



The information above had been obtained from sources believed to be reliable. While we do not doubt its accuracy, we have not verified it, make no guarantee, warranty or representation about it. It is your responsibility to independently confirm its accuracy and completeness. All information is subject to change without notice.