

**NEW TO MARKET
WITH FREEWAY VISIBILITY
& DOCK-HIGH LOADING**

13,204 SF Freestanding Industrial Building



32707 Calle Perfecto, San Juan Capistrano

HIGHLIGHTS

- 13,204 sq. ft. Total Size
- 2,500 sq. ft. Single Story Office/ Showroom Space
- 10,704 sq. ft. Warehouse
- 2 Ground-level Door
- 1 Dock-high Loading Door
- 800 Amps of Power
- 25' Warehouse Clearance
- Convenient Truck Loading
- Excellent Freeway Access & Visibility

For More Information, Please Contact: [949.366.2020](tel:949.366.2020)



SCAN OR CLICK
TO VIEW OUR
WEBSITE

ROB JOHNSTON, President
Lic# 01121630
rob@johnston-pacific.com

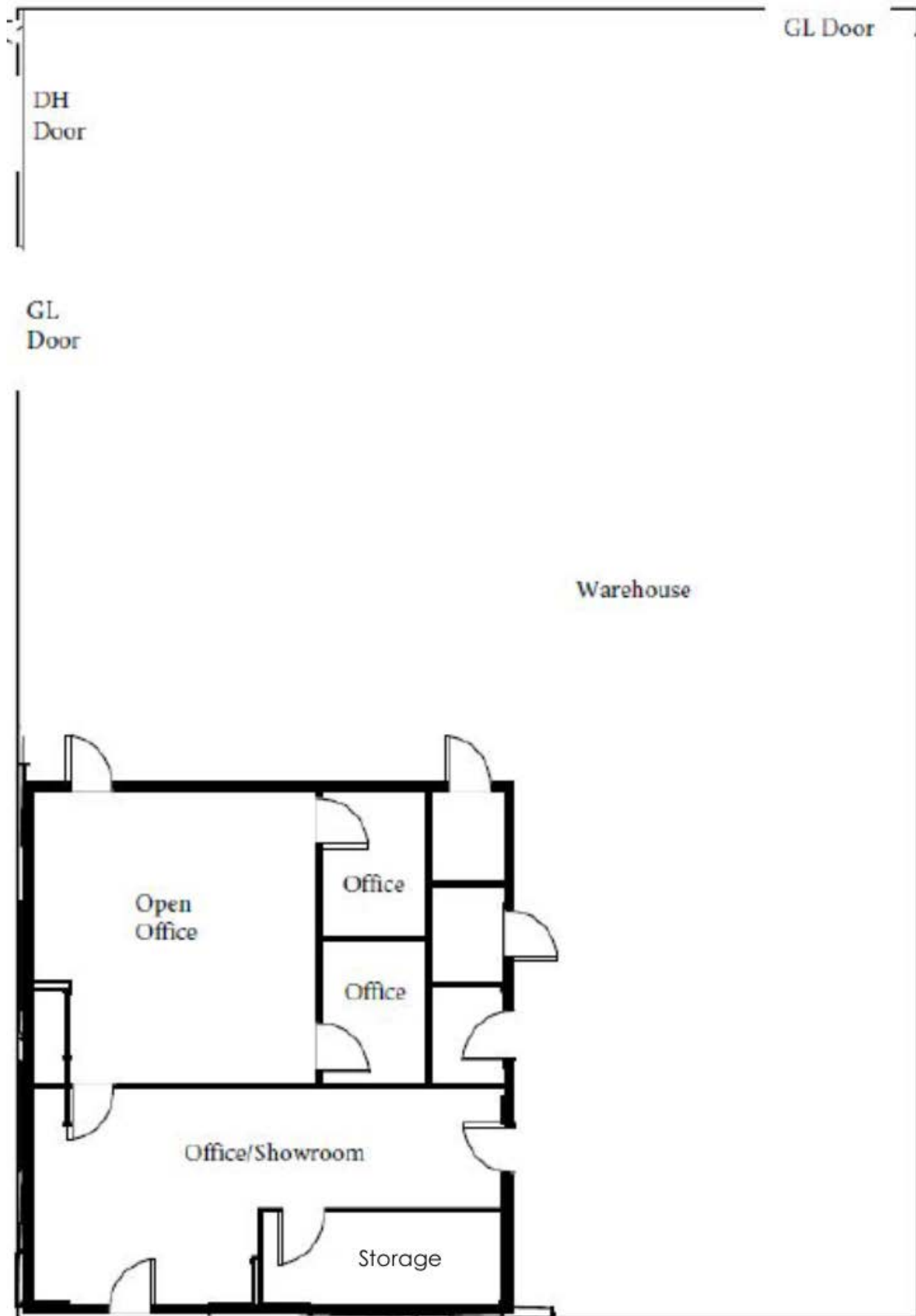
LOUIS JOHNSTON, Vice President
Lic# 02054162
louis@johnston-pacific.com

www.johnston-pacific.com

The information above had been obtained from sources believed to be reliable. While we do not doubt its accuracy, we have not verified it, make no guarantee, warranty or representation about it. It is your responsibility to independently confirm its accuracy and completeness. All information is subject to change without notice. Johnston Pacific does not represent the landlord or owner of this property.

JOHNSTON PACIFIC
COMMERCIAL REAL ESTATE, INC.

FLOOR PLAN



The information above had been obtained from sources believed to be reliable. While we do not doubt its accuracy, we have not verified it, make no guarantee, warranty or representation about it. It is your responsibility to independently confirm its accuracy and completeness. All information is subject to change without notice.