

FOR SUBLEASE
3,860 SF INDUSTRIAL UNIT



946 Calle Amanecer, Suite L&M, San Clemente, CA

Multi-Tenant Industrial Unit

Sublease Through January 31, 2025

Building Highlights

- Unit Size: ±3,860 Sf
- Office: ±2,004 Sf
- Warehouse: ±1,856 Sf
- 2 Ground-Level Doors
- 16' Warehouse Clearance

Business Highlights

- Unique Size to Grow Business
- Pristine Condition & Move-In Ready
- Convenient Location Near Pico/I-5
- Adaptable Space Tailored to Fit Your Business
- Prime Sublease Opportunity



JOHNSTON PACIFIC



ROB JOHNSTON

President

Lic# 01121630

rob@johnston-pacific.com

LOUIS JOHNSTON

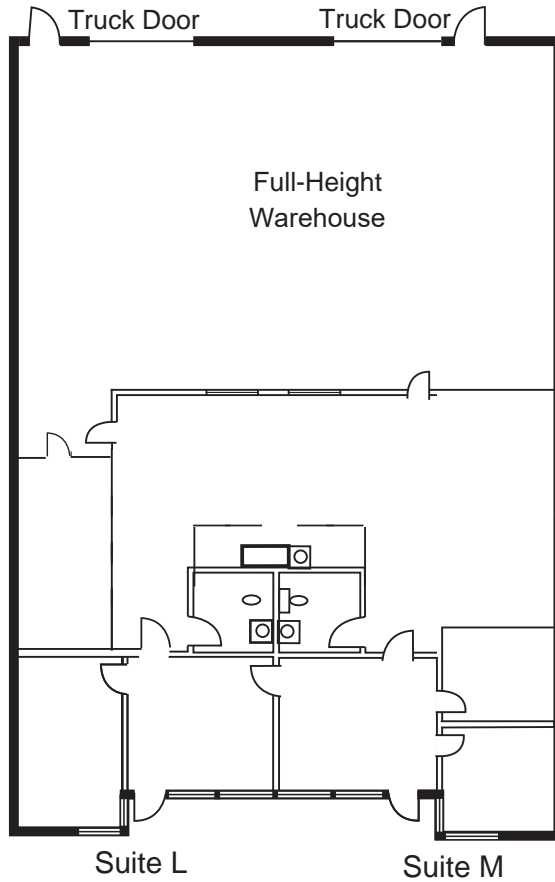
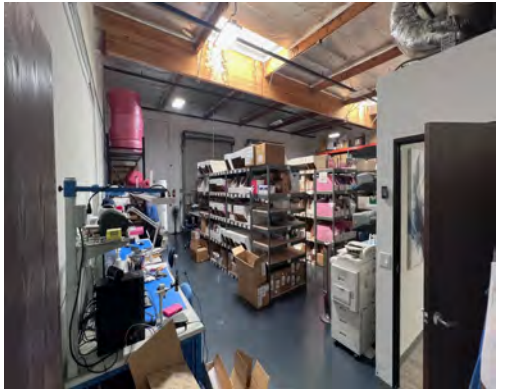
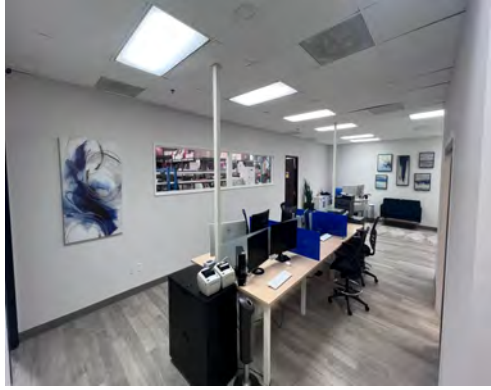
Vice President

Lic# 02054162

louis@johnston-pacific.com

JOHNSTON PACIFIC
COMMERCIAL REAL ESTATE, INC.

PROPERTY PHOTOS



To tour this property contact Rob or Louis: 949.366.2020