



2,475 SF | PREMIUM OFFICE SUITE FOR LEASE IN IRVINE



8895 Research Drive #100, Irvine

OFFICE HIGHLIGHTS:

- 2,475 sq. ft. Total Suite Size
- Reception, 2 Private Offices, Open Office Area, Conference Room, Data Room, Wetbar with Sink, Storage Area and 2 Restrooms
- Located in desired Irvine Spectrum Area
- Close to Freeway, Shopping & Dining Amenities
- 8 Unreserved Parking Stalls
- Fully Furnished Suite

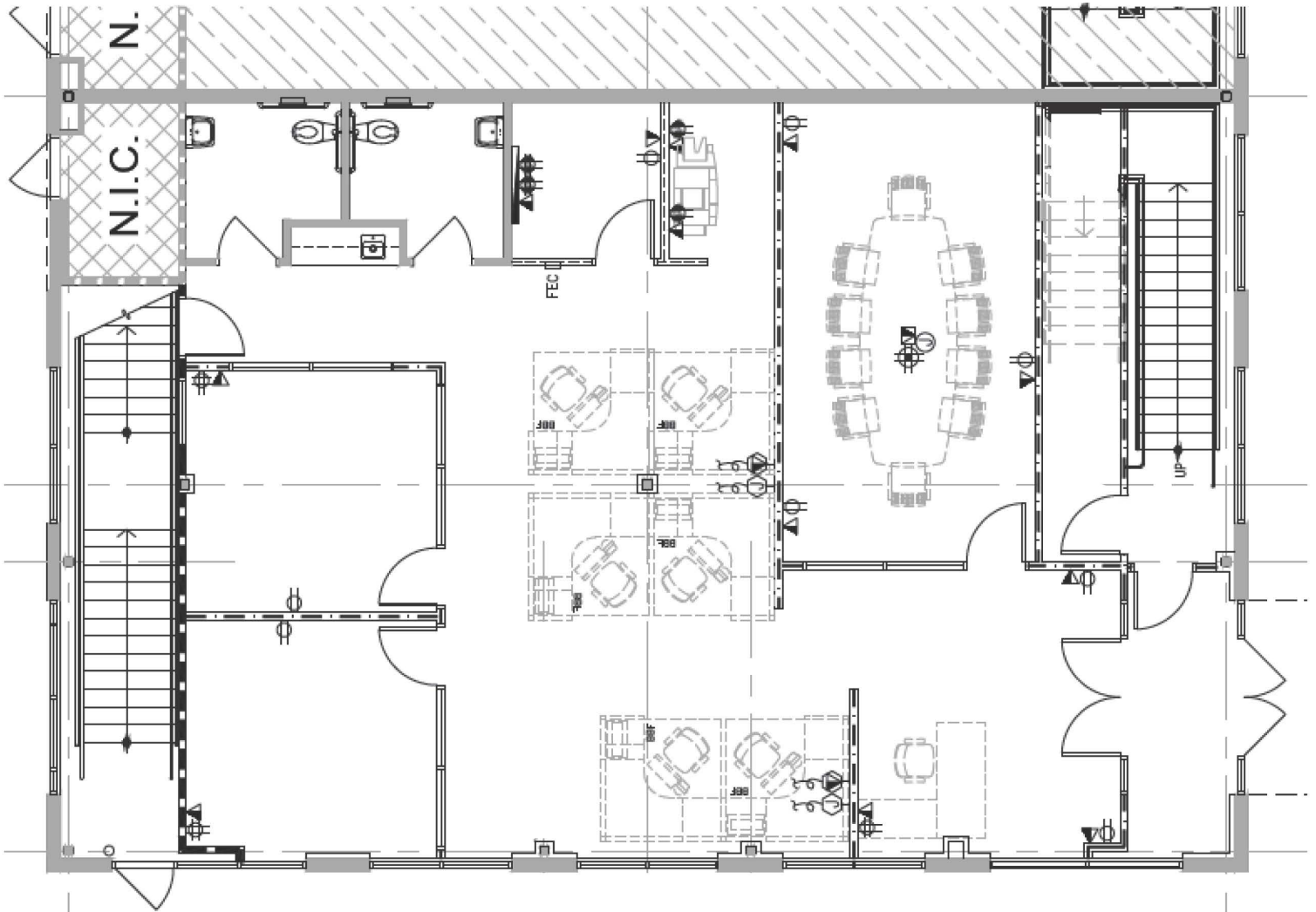


JOHNSTON PACIFIC
COMMERCIAL REAL ESTATE, INC.

Rob Johnston
President
(949) 366-2020
rob@johnston-pacific.com
www.johnston-pacific.com
Lic# 01121630

Louis Johnston
Vice President
(949) 366-2020
louis@johnston-pacific.com
www.johnston-pacific.com
Lic# 02054162

FLOOR PLAN



Johnston Pacific Commercial Real Estate, Inc.
(949) 366-2020 | www.johnston-pacific.com
1305 Calle Avanzado, San Clemente, CA 92673
26240 Enterprise Court, Lake Forest, CA 92630

The information above had been obtained from sources believed to be reliable. While we do not doubt its accuracy, we have not verified it, make no guarantee, warranty or representation about it. It is your responsibility to independently confirm its accuracy and completeness. All information is subject to change without notice.