

FOR SALE - 2,240 SQ. FT.



26238 Enterprise Court, Lake Forest

★ **SMALL OFFICE CONDO FOR SALE** ★

HIGHLIGHTS

- Strategic South Orange County location
- Single story office condo
- 8 private window offices
- Break Room
- Open office area
- Close freeway and Toll Road Access
- Next to a plethora of amenities and adjacent to over 700 new homes being built at The Meadows

For More Information, Please Contact: [949.366.2020](tel:949.366.2020)



JOHNSTON PACIFIC
COMMERCIAL REAL ESTATE, INC.



SCAN OR CLICK
TO VIEW 3D
VIRTUAL TOUR

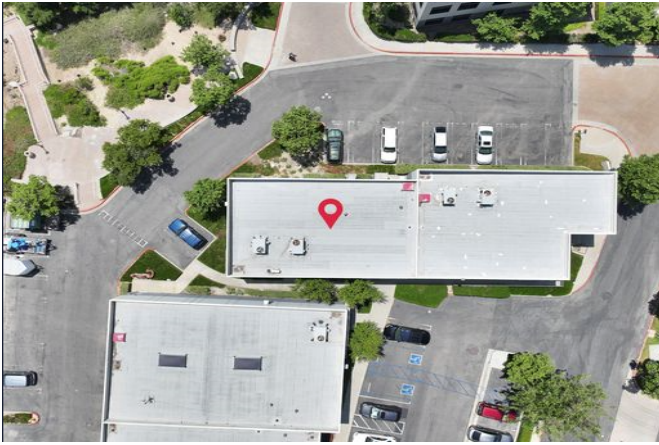
ROB JOHNSTON, President
Lic# 01121630
rob@johnston-pacific.com

LOUIS JOHNSTON, Vice President
Lic# 02054162
louis@johnston-pacific.com

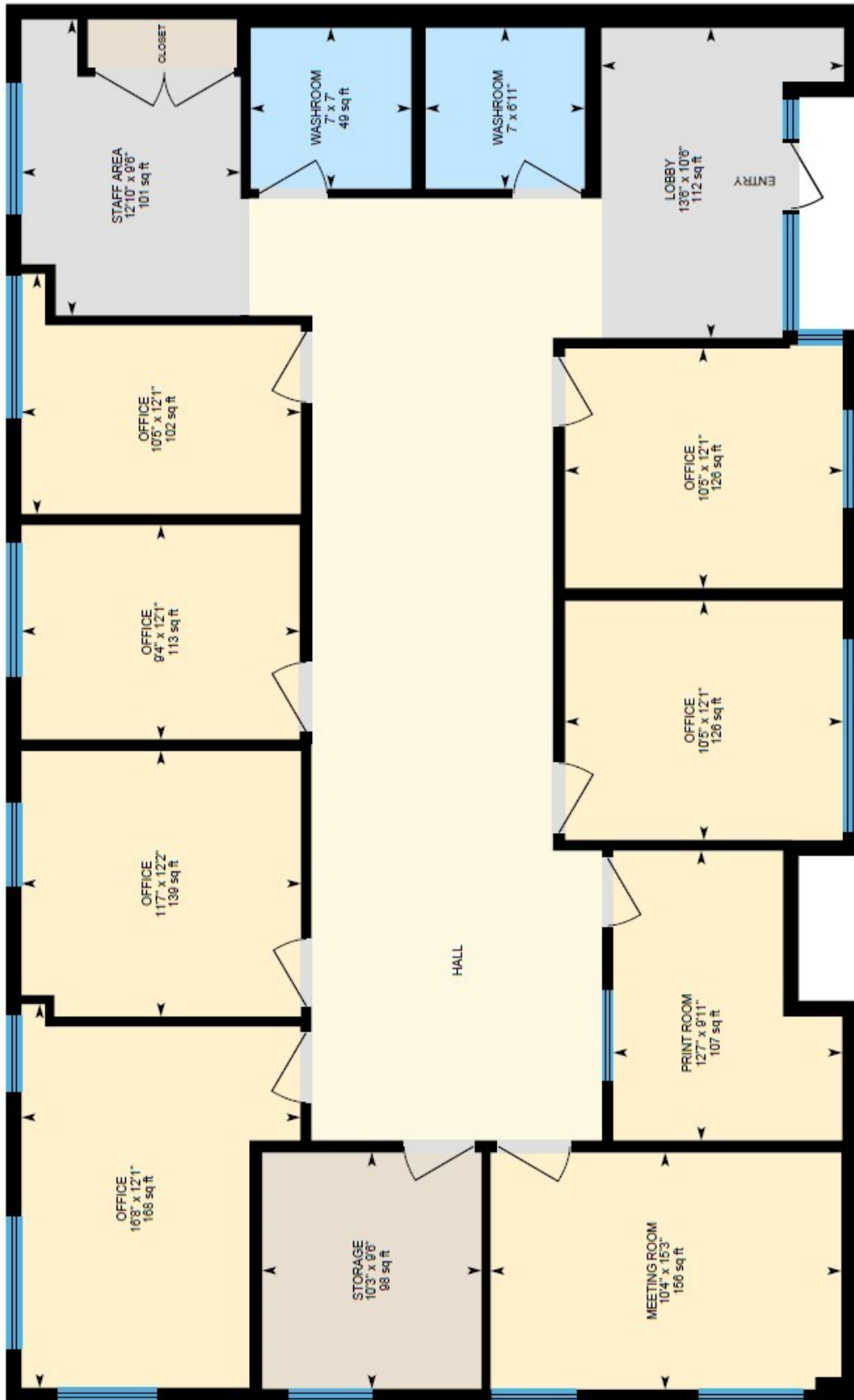
www.johnston-pacific.com

The information above had been obtained from sources believed to be reliable. While we do not doubt its accuracy, we have not verified it, make no guarantee, warranty or representation about it. It is your responsibility to independently confirm its accuracy and completeness. All information is subject to change without notice.

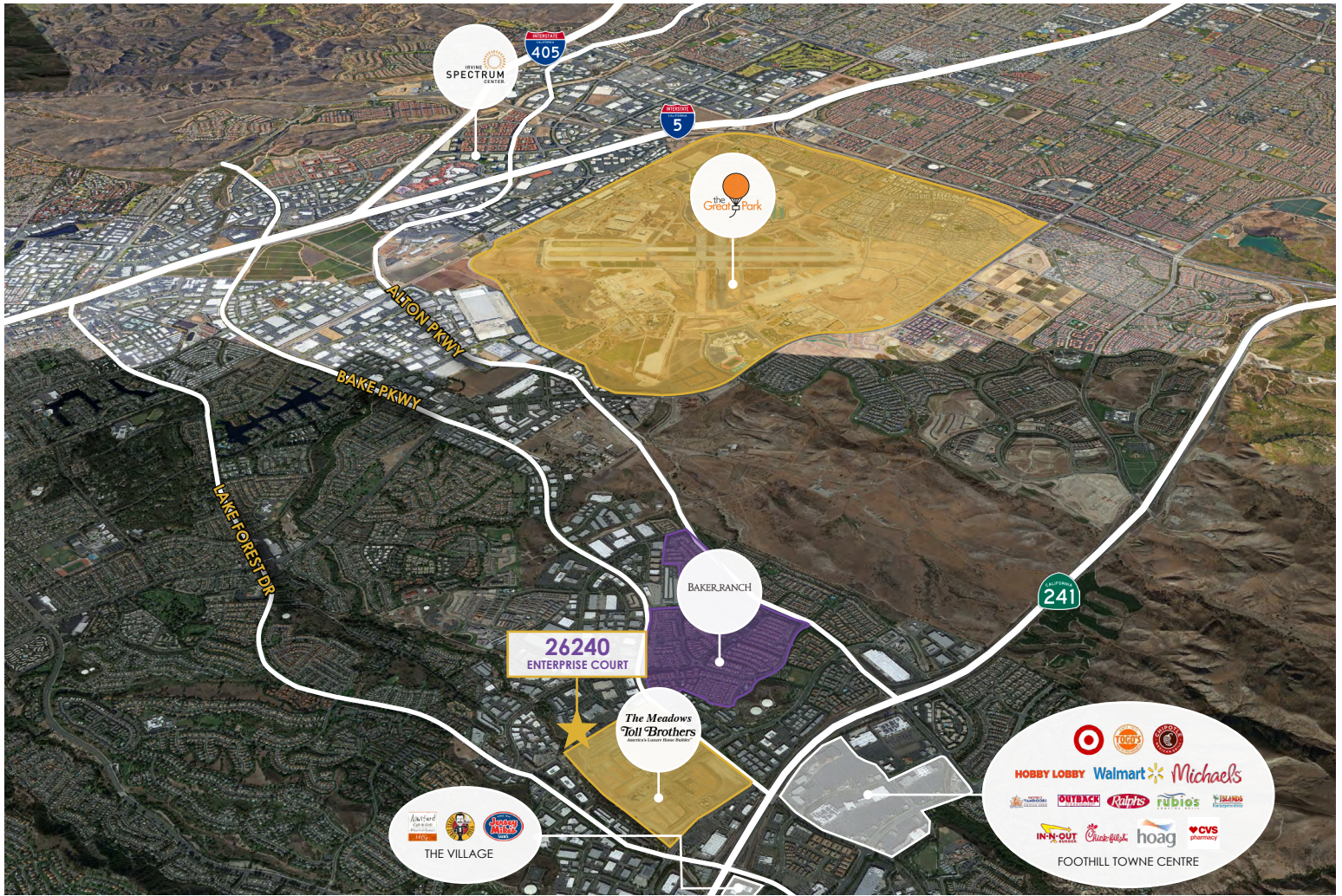
PROPERTY PHOTOS



FLOOR PLAN



LOCAL AMENITIES ARE ABUNDANT



For More Information Or To Schedule A Tour, Please Contact Rob or Louis at: [949.366.2020](tel:949.366.2020)

ROB JOHNSTON, President
Lic# 01121630
rob@johnston-pacific.com

LOUIS JOHNSTON, Vice President
Lic# 02054162
louis@johnston-pacific.com

www.johnston-pacific.com



JOHNSTON PACIFIC
COMMERCIAL REAL ESTATE, INC.

The information above had been obtained from sources believed to be reliable. While we do not doubt its accuracy, we have not verified it, make no guarantee, warranty or representation about it. It is your responsibility to independently confirm its accuracy and completeness. All information is subject to change without notice.