



13,442 sf Industrial

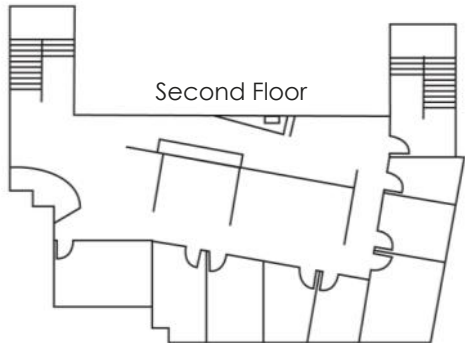
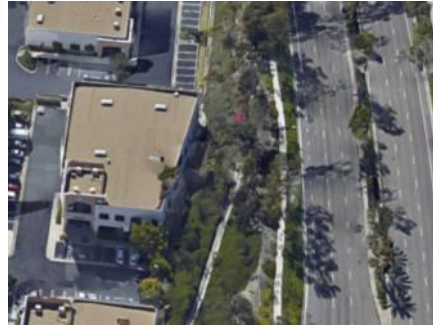
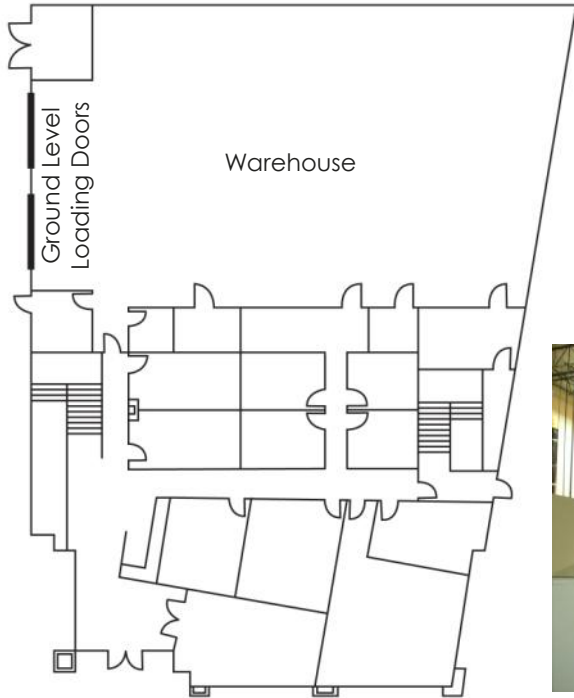
Just Listed For Sale



Rob Johnston
Jim Wynne
949-366-2020

JOHNSTON PACIFIC
COMMERCIAL REAL ESTATE, INC.

The information above has been obtained from sources believed to be reliable. While we do not doubt its accuracy, we have not verified it, make no guarantee, warranty or representation about it. It is your responsibility to independently confirm its accuracy and completeness. All information is subject to change without notice. License #01121630



13,442 sf Industrial Building For Sale

- Two story office/warehouse freestanding building
- Affordable financing
- Upgraded office interiors
- South Orange County business park location

JOHNSTON PACIFIC
COMMERCIAL REAL ESTATE, INC.

Rob Johnston
949-366-2020

Johnston Pacific
Commercial Real Estate, Inc.
1305 Calle Avanzado
San Clemente, CA 92673

PRSRT STD
U.S. POSTAGE
PAID
Laguna Niguel, CA
PERMIT NO. 400