

1,937 Sq. Ft. Industrial Condo For Sublease

2018 Is Your Year.

1235 PDS #300 Is Your Condo.



Ready To Energize Your Business Journey?

- 1,937 Total Sq. Ft.
- 778 Office Sq. Ft.
- 1,159 Warehouse Sq. Ft.
- 1 Ground Level Loading Door
- 5 Parking Stalls
- Private Office Plus Open Office Area
- Office and Warehouse Restrooms
- 18' Clearance Warehouse
- Welcoming Lobby And Reception Area
- Professional Business Space To Impress Clients And Grow Your Income!

Now the only question is: how
will you decide to celebrate
your exclusive new space?

We have some ideas, give us
a call.



Rob Johnston

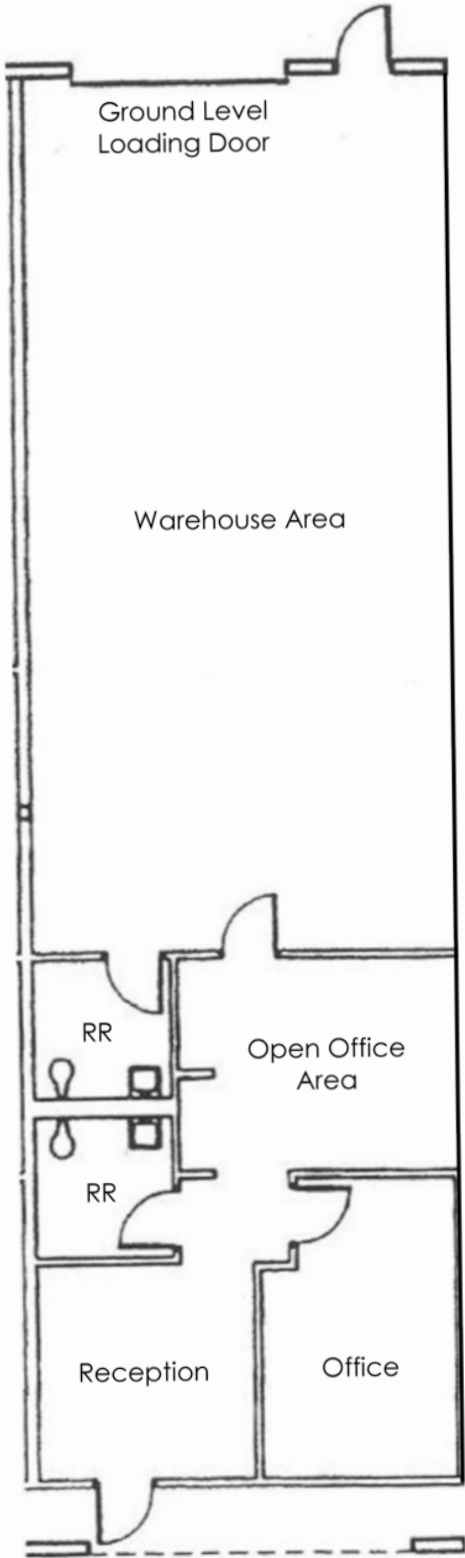


Jim Wynne

949-366-2020

JOHNSTON PACIFIC
COMMERCIAL REAL ESTATE, INC.

Approximate Floor Plans



Rob Johnston: rob@johnston-pacific.com
Jim Wynne: jim@johnston-pacific.com