

# Exotic 4,000SF Industrial Complex

For Lease In South Orange County

## A Secure Yard So Big You Could Open A Prison



### Your Impressive Property Highlights:

- 4,000 SF Total Unit Size
- 3,087 SF 17' Clearance Warehouse
- 913 SF Single-Story Office
- 12,000 SF Fenced Yard With Parking  
Protect Vehicles, Equipment, And More!
- 1 Ground-Level Loading Door
- 28 Parking Stalls | Extra-Secure
- Exclusive Corner Compound Site For A  
Distraction-Free Work Location
- Shopping, Dining, And Executive  
Services Located Around The Corner
- 2 Restrooms, Private Offices, Reception  
Warehouse And Hallway Space

**949-366-2020**

Finding a secure location to protect your business assets can be a serious challenge, so we don't want you to miss your chance on this fortress. Call us to get your questions answered and schedule a tour.



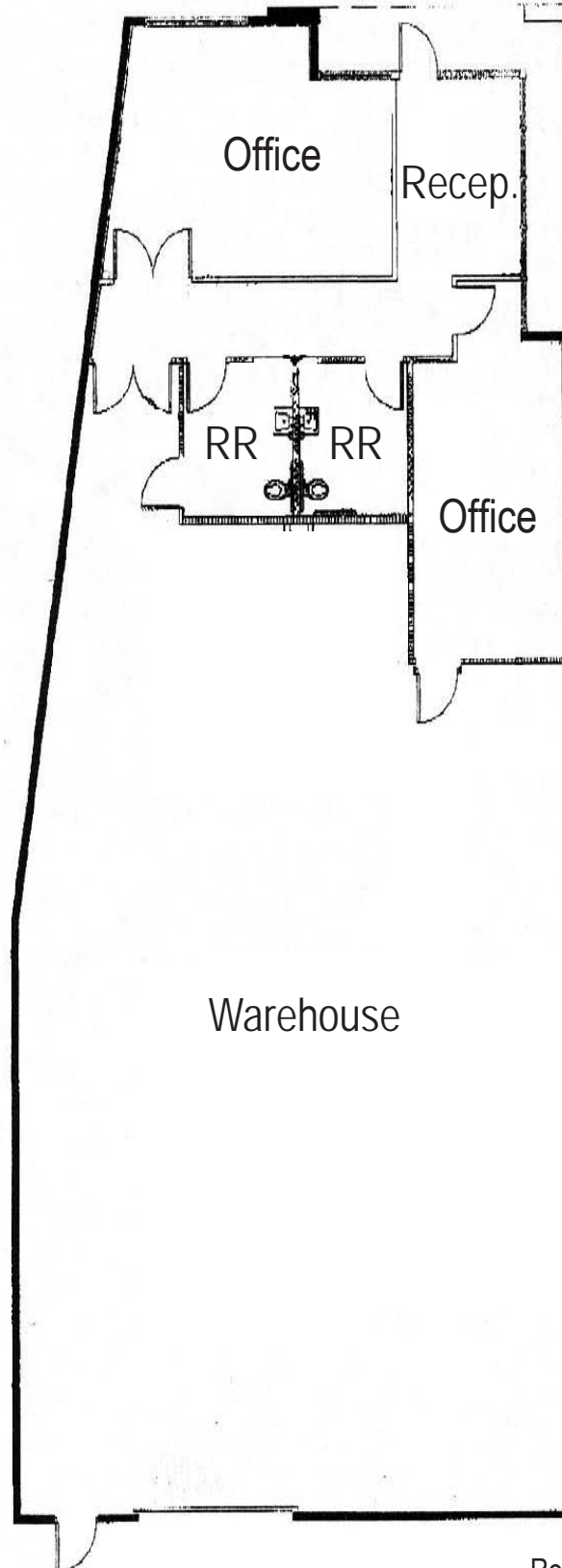
Rob Johnston



Jim Wynne

**JOHNSTON PACIFIC**  
COMMERCIAL REAL ESTATE, INC.

# Approximate Floor Plan



Rob Johnston: [rob@johnston-pacific.com](mailto:rob@johnston-pacific.com)  
Jim Wynne: [jim@johnston-pacific.com](mailto:jim@johnston-pacific.com)

**JOHNSTON PACIFIC**  
COMMERCIAL REAL ESTATE, INC.

Office: 949-366-2020

The information above had been obtained from sources believed to be reliable. While we do not doubt its accuracy, we have not verified it, make no guarantee, warranty or representation about it. It is your responsibility to independently confirm its accuracy and completeness. All information is subject to change without notice.