

5,324 SF Industrial Condo

On The Market For Lease

An Improved Business Space For Improved Income Earning

You Need This To Bring In More
Money For Your Business:

- 5,324 SF Total Work Space
- 1,990 SF 25ft. Clearance Warehouse
- 2,034 SF Multi-Story Office Areas
- 1,300 SF Tier-1 Mezzanine Structure
- 1 Ground-Level Loading Door
- Approx. 8 Parking Stalls | Reserved!
- Diverse Business Community With Booming Micro-Economy In Park
- Elevated Hill-Side Location | Unrestricted Views Of Area!
- Absolute Delivery Freedom With Drive-Around Building Connections

949-366-2020

Congratulations on reaching this stage in your business! All your hard work and long hours has brought you to this point of growth. It's a *fantastic* feeling and a true reason to celebrate your new, *better* building!



Louis Johnston



Rob Johnston



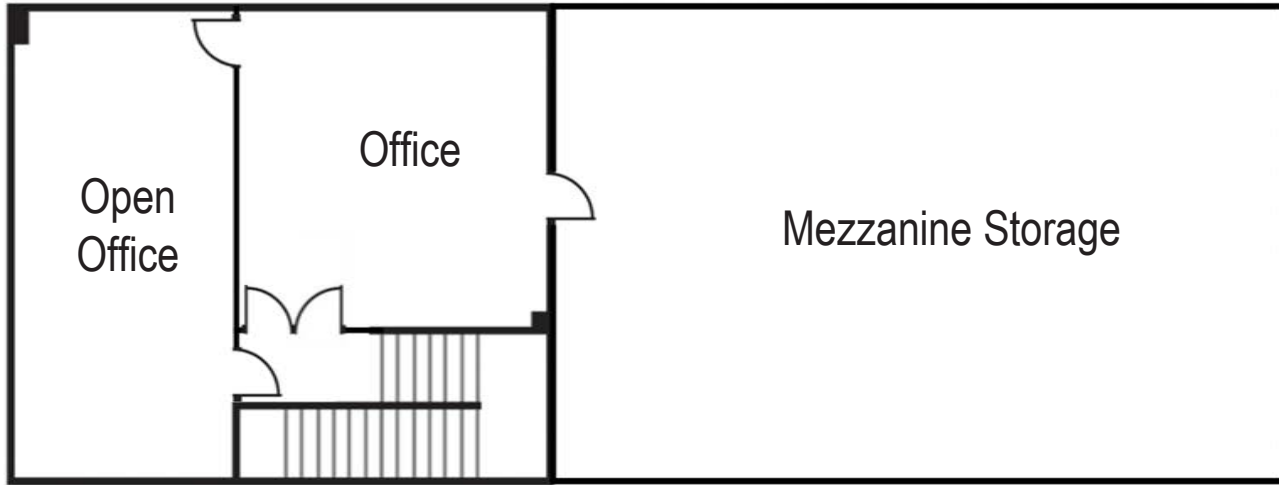
Jim Wynne

JOHNSTON PACIFIC
COMMERCIAL REAL ESTATE, INC.

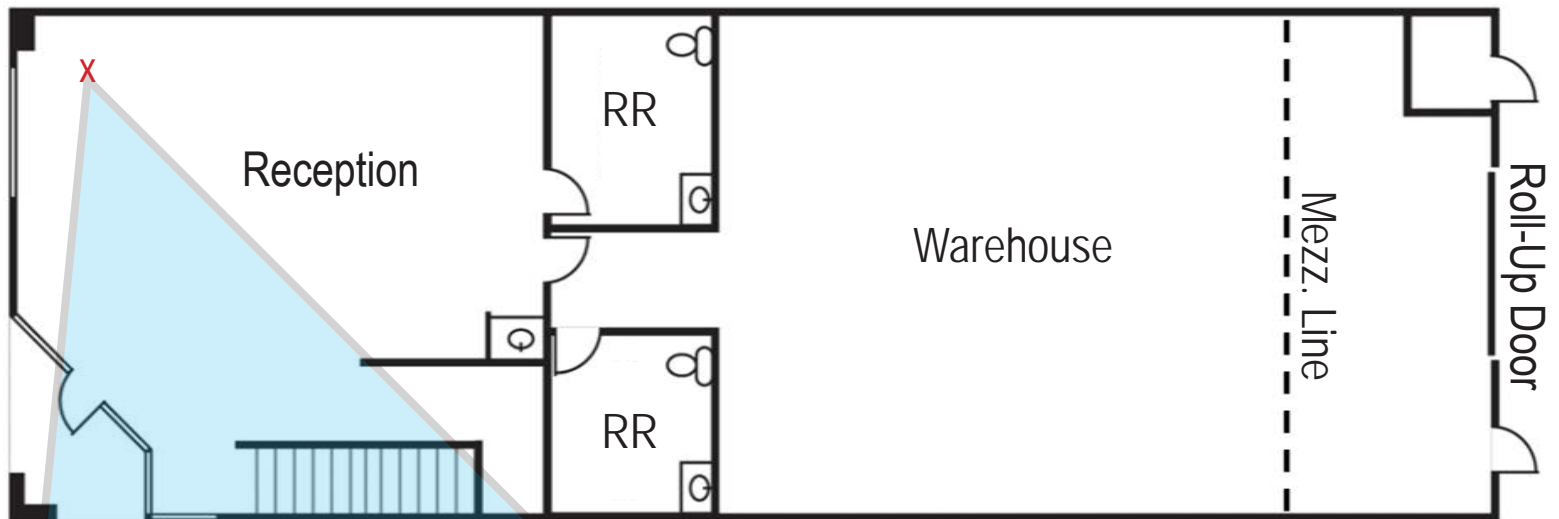
The information above had been obtained from sources believed to be reliable. While we do not doubt its accuracy, we have not verified it, make no guarantee, warranty or representation about it. It is your responsibility to independently confirm its accuracy and completeness. All information is subject to change without notice.

Approximate Floor Plans

Second Floor



First Floor



Rob Johnston: rob@johnston-pacific.com
Jim Wynne: jim@johnston-pacific.com
Louis Johnston: louis@johnston-pacific.com

JOHNSTON PACIFIC
COMMERCIAL REAL ESTATE, INC.

Office: 949-366-2020

The information above had been obtained from sources believed to be reliable. While we do not doubt its accuracy, we have not verified it, make no guarantee, warranty or representation about it. It is your responsibility to independently confirm its accuracy and completeness. All information is subject to change without notice.