

12,206 sq. ft. Office/Warehouse Unit For Lease



950 Calle Amanecer, Unit 200, San Clemente

- 6,337 sq. ft. office area
- 5,869 sq. ft. warehouse area
- 2 ground level loading doors
- 27' warehouse clearance
- 26 parking stalls
- \$1.15 gross per sq. ft. (\$14,037 per month)

Rob Johnston
Jim Wynne

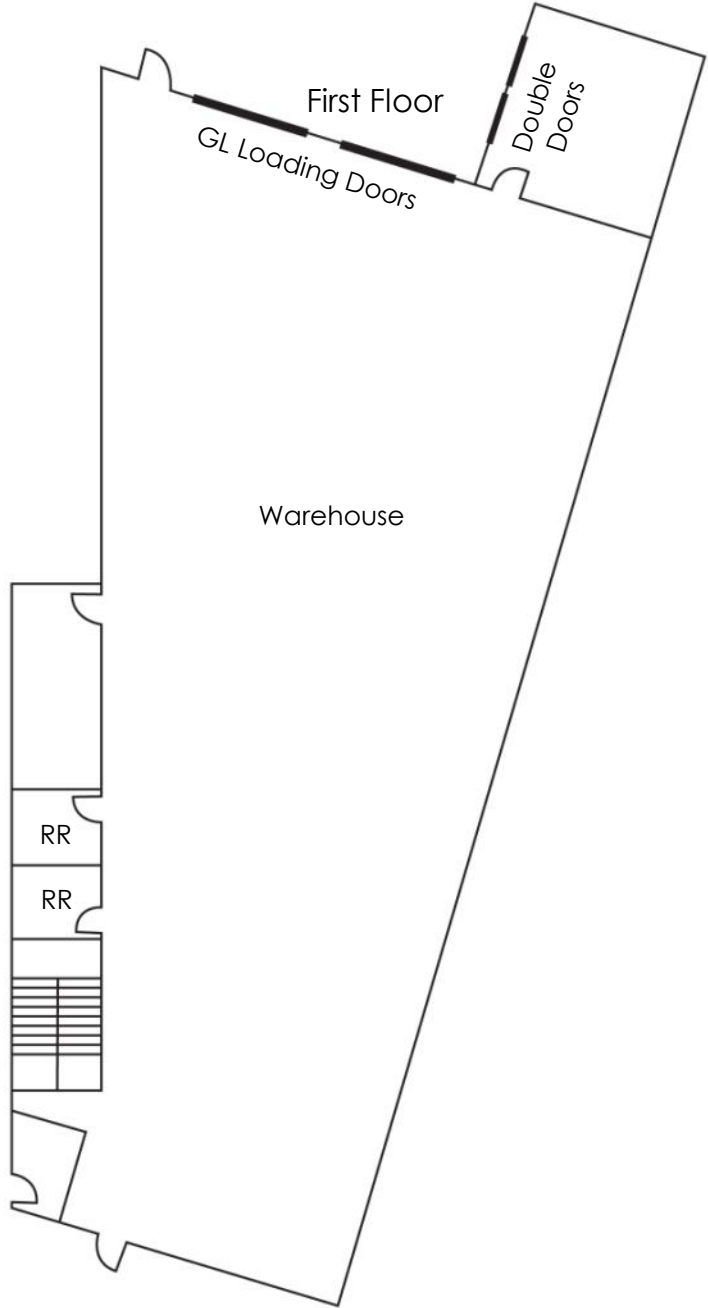
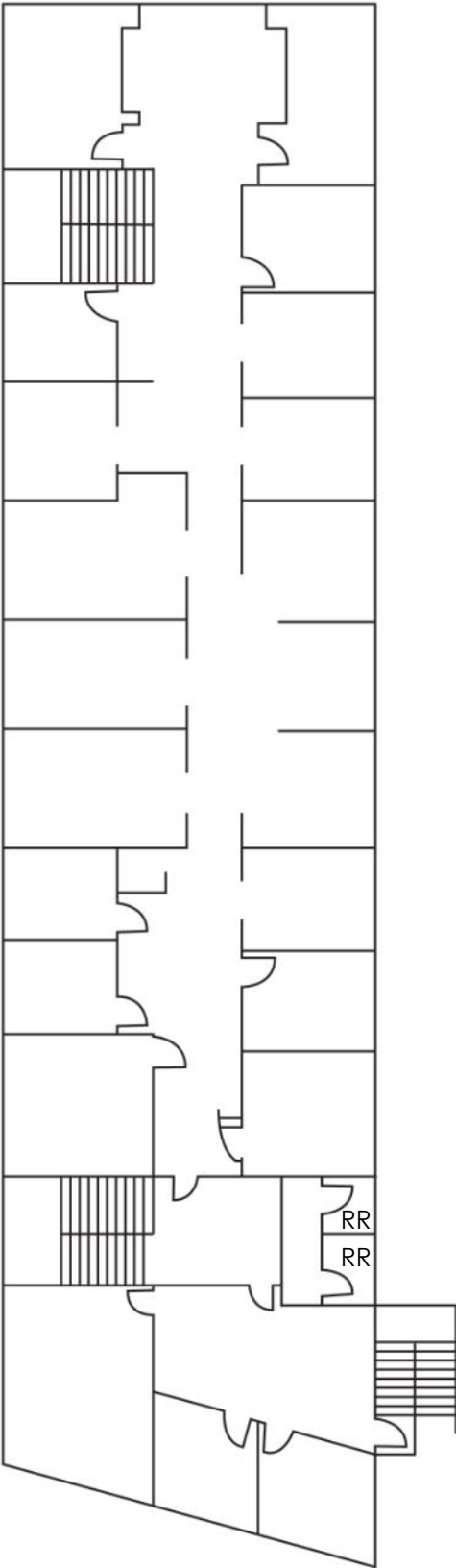
JOHNSTON PACIFIC
COMMERCIAL REAL ESTATE, INC.

949-366-2020
www.johnston-pacific.com
License #01121630

The information herein has been obtained from sources believed to be reliable. While we do not doubt its accuracy, we have not verified it, make no guarantee, warranty or representation about it. It is your responsibility to independently confirm its accuracy and completeness. All information is subject to change without notice.

Second Floor

Entrance on first floor



Rob Johnston
Jim Wynne

949-366-2020

JOHNSTON PACIFIC
COMMERCIAL REAL ESTATE, INC.

The information herein has been obtained from sources believed to be reliable. While we do not doubt its accuracy, we have not verified it, make no guarantee, warranty or representation about it. It is your responsibility to independently confirm its accuracy and completeness. All information is subject to change without notice.