

2,800 sq. ft. Office/Warehouse Unit For Lease



921 Calle Amanecer, Unit K/L, San Clemente

- Approx. 480 sq. ft. office area
- Approx. 2,320 sq. ft. warehouse area
- 2 ground level loading doors
- 13' warehouse clearance
- 100 to 200 amp power supply
- \$1.20 MG per sq. ft. plus \$248 CAM (\$3,608 per month)

Rob Johnston • Jim Wynne

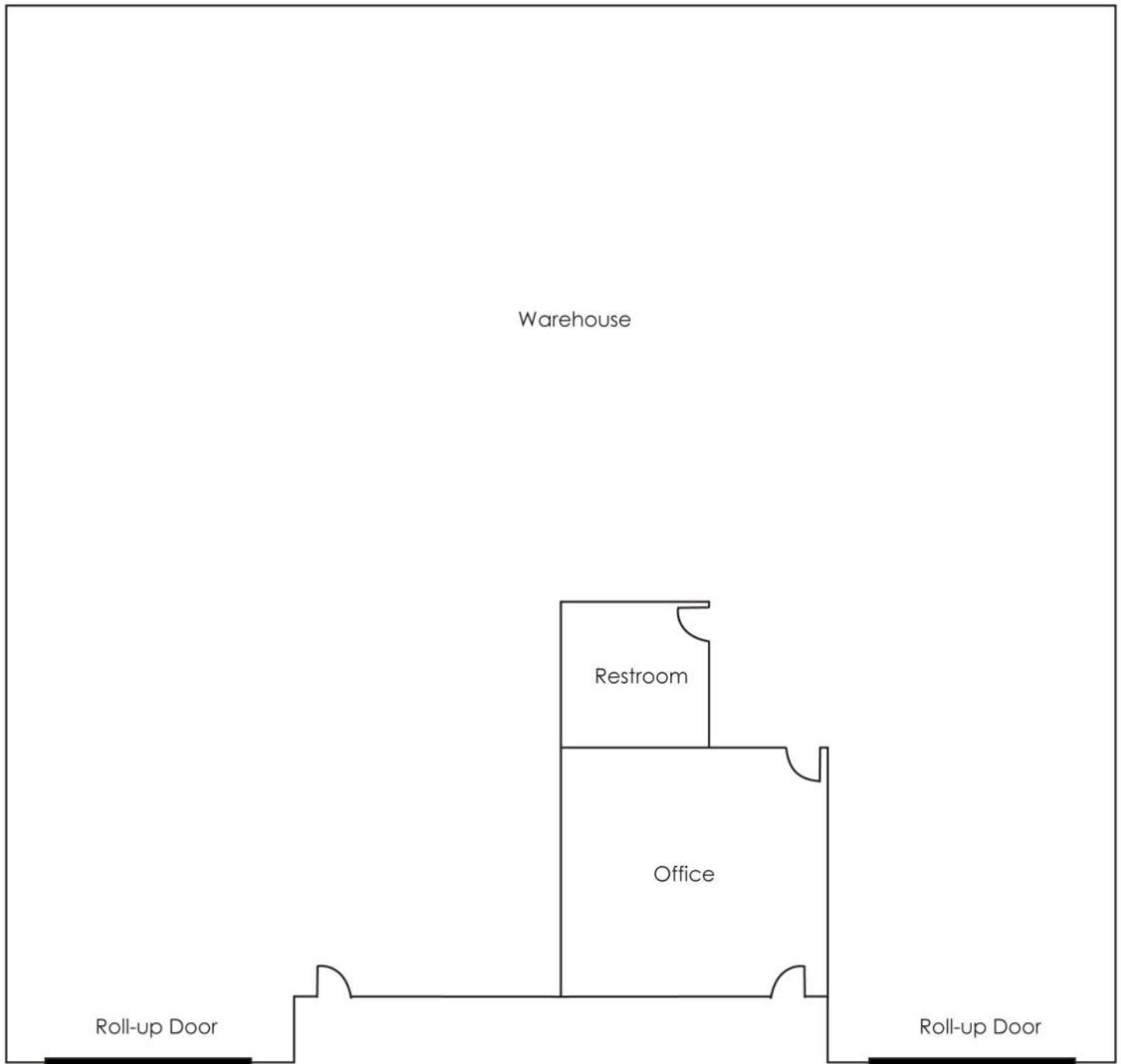
JOHNSTON PACIFIC

COMMERCIAL REAL ESTATE, INC.

949-366-2020

The information above has been obtained from sources believed to be reliable. While we do not doubt its accuracy, we have not verified it, make no guarantee, warranty or representation about it. It is your responsibility to independently confirm its accuracy and completeness. All information is subject to change without notice.

921 Calle Amanecer, Unit K/L, San Clemente
Approximate Floor Plan



Rob Johnston
Jim Wynne

949-366-2020
License #01121630

JOHNSTON PACIFIC
COMMERCIAL REAL ESTATE, INC.

The information above has been obtained from sources believed to be reliable. While we do not doubt its accuracy, we have not verified it, make no guarantee, warranty or representation about it. It is your responsibility to independently confirm its accuracy and completeness. All information is subject to change without notice.