



784 sq. ft. Office Unit For Lease

Rob Johnston

Jim Wynne



915 Calle Amanecer, Unit J, San Clemente

- 784 sq. ft. Office Area
- Reception, Restroom, and Two Offices
- 4 Parking Stalls
- \$1.26 + \$0.09 Common Area Maintenance = \$1.35 gross per sq. ft. (\$1,058.40 per month)

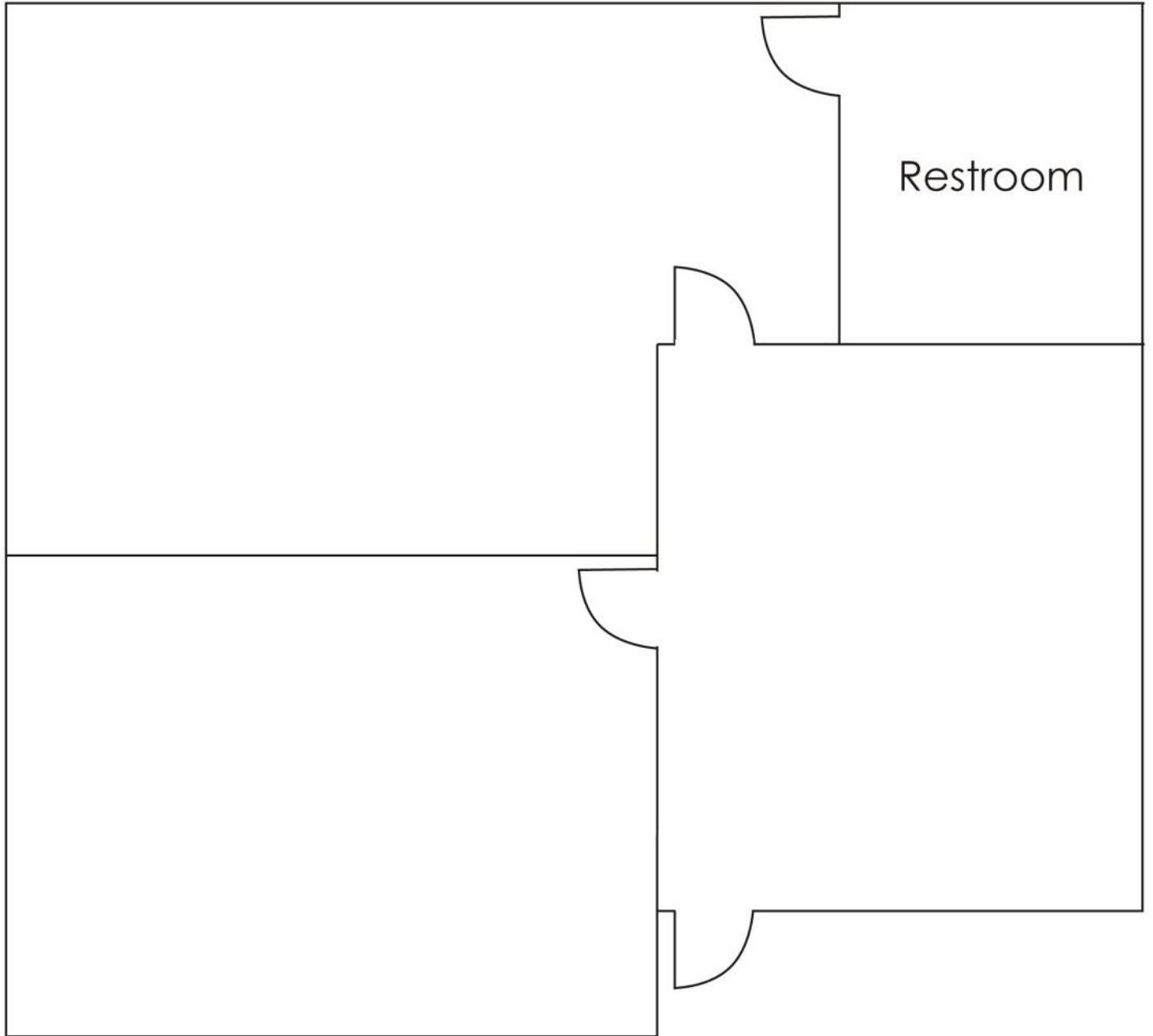
Rob Johnston
Jim Wynne

JOHNSTON PACIFIC
COMMERCIAL REAL ESTATE, INC.

949-366-2020
www.johnston-pacific.com
License #01121630

The information herein has been obtained from sources believed to be reliable. While we do not doubt its accuracy, we have not verified it, make no guarantee, warranty or representation about it. It is your responsibility to independently confirm its accuracy and completeness. All information is subject to change without notice.

915 Calle Amanecer #J
Approximate Floor Plan



Rob Johnston
Jim Wynne

949-366-2020

JOHNSTON PACIFIC
COMMERCIAL REAL ESTATE, INC.

The information herein has been obtained from sources believed to be reliable. While we do not doubt its accuracy, we have not verified it, make no guarantee, warranty or representation about it. It is your responsibility to independently confirm its accuracy and completeness. All information is subject to change without notice.