

2,000 sq. ft. Office/Warehouse Unit For Sublease



22515 Aspan Street, Unit H, Lake Forest

- Sublease through 1/31/17
- Approx. 1,250 sq. ft. office area
- Approx. 750 sq. ft. warehouse area
- Reception, 3 offices, restroom and warehouse
- Ground level loading
- 15' warehouse clearance
- 6 parking stalls
- Call to show

Mark Gomez
Rob Johnston

949-366-2020

www.johnston-pacific.com

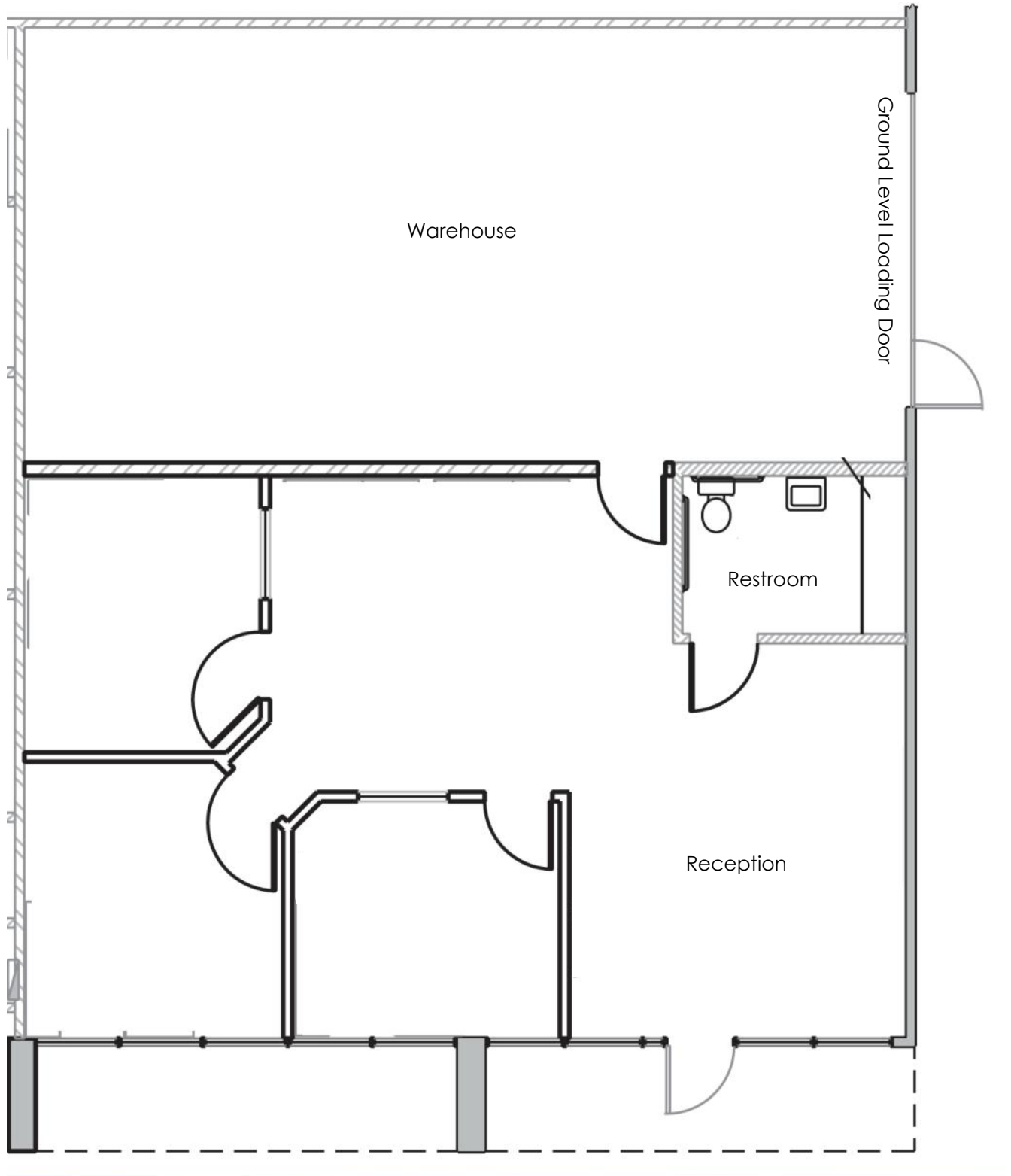
1305 Calle Avanzado, San Clemente

License #01121630

JOHNSTON PACIFIC
COMMERCIAL REAL ESTATE, INC.

The information above has been obtained from sources believed to be reliable. While we do not doubt its accuracy, we have not verified it, make no guarantee, warranty or representation about it. It is your responsibility to independently confirm its accuracy and completeness. All information is subject to change without notice.

22515 Aspan Street, Unit H, Lake Forest



Mark Gomez
Rob Johnston

JOHNSTON PACIFIC
COMMERCIAL REAL ESTATE, INC.

949-366-2020
markg@johnston-pacific.com

The information above has been obtained from sources believed to be reliable. While we do not doubt its accuracy, we have not verified it, make no guarantee, warranty or representation about it. It is your responsibility to independently confirm its accuracy and completeness. All information is subject to change without notice.