

3,102 sq. ft. Office/Warehouse Condominium For Sale



- 1,192 sq. ft. office area
- 1,899 warehouse area
- Reception and open office area
- Three offices
- Two-story lobby
- Exclusive parking
- 21' warehouse clearance
- Call to tour

1046 Calle Recodo, Unit I, San Clemente

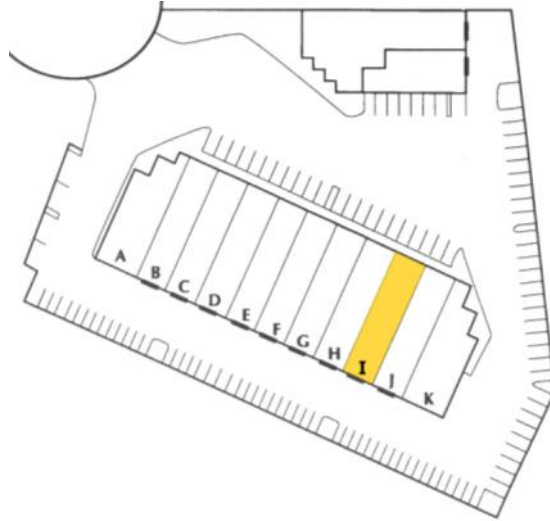
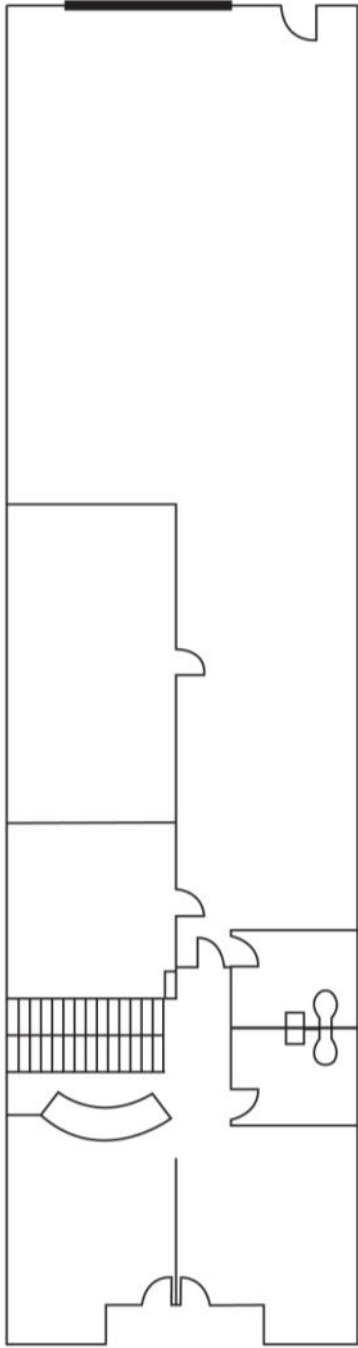
JOHNSTON PACIFIC
COMMERCIAL REAL ESTATE, INC.

Rob Johnston • Jim Wynne • Xavier Nolasco

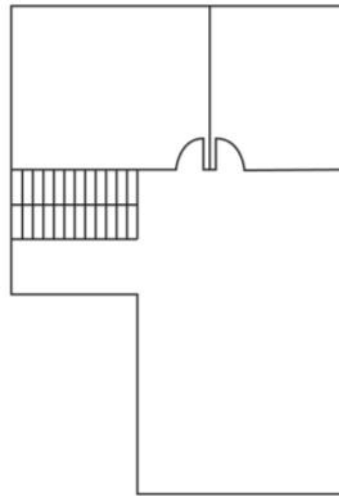
949-366-2020
1305 Calle Avanzado, San Clemente, CA 92673
www.johnston-pacific.com
License #01242705

The information obtained above has been obtained from sources believed to be reliable. While we do not doubt its accuracy, we have not verified it, make no guarantee, warranty or representation about it. It is your responsibility to independently confirm its accuracy and completeness. All information is subject to change without notice.

1046 Calle Recodo, Unit I, San Clemente



Upstairs



Rob Johnston • Jim Wynne • Xavier Nolasco
949-366-2020

JOHNSTON PACIFIC
COMMERCIAL REAL ESTATE, INC.

The information obtained above has been obtained from sources believed to be reliable. While we do not doubt its accuracy, we have not verified it, make no guarantee, warranty or representation about it. It is your responsibility to independently confirm its accuracy and completeness. All information is subject to change without notice.